







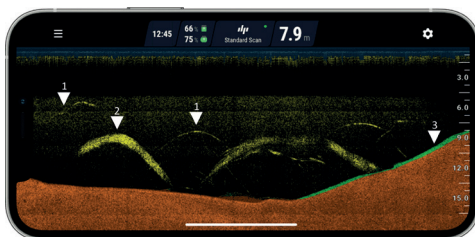
CASTABLE SONARS 2022

BRAND MODEL		Deeper Start		Deeper PRO		Deeper PRO+ 2		Deeper CHIRP+ 2
OTHER INFO								
Warranty		2 year warranty		2 year warranty		2 year warranty		5 year warranty
MAIN FEATURES								
Connectivity		Wifi		Wifi		Wifi		Wifi
Casting distance		50 m / 165 ft		100 m / 330 ft		100 m / 330 ft		120 m/394ft
Min depth		0.5 m / 1,6 ft		0.5 m / 1,6 ft		0.15 m / 6 in		0.15 m / 6 in
Max depth		50 m / 165 ft		80 m / 260 ft		100 m / 330 ft		100 m / 330 ft
Weight		65g / 2.3 oz		100g / 3.5 oz		90g / 3.2 oz		95g / 3.3 oz
Sampling cone /angle		" Single beam 40° @ 120 kHz"		"Dual beam 15° @ 290 kHz 55° @ 90 kHz"		"Triple beam 7° @ 675 kHz 20° @ 240 kHz 47° @ 100 kHz "		"Triple beam 7° @ 675 kHz CHIRP 20° @ 240 kHz CHIRP 47° @ 100 kHz CHIRP"
Target separation		5 cm / 2 in		2,5 cm / 1 in		1 cm / 0.4 in (narrow beam)		1 cm / 0.4 in (narrow beam)
Temperature range		0 to 40C / 32F to 104F		-20 to 40C / -4F to 104F		-20 to 40C / -4F to 104F		-20 to 40C / -4F to 104F
GPS		NO		NO		YES		YES
Scanning rate		up to 10/s		up to 15/s		up to 15/s		up to 15/s
Working time		up to 6 hours		up to 6 hours		Up to 9 hours		GPS on up to 11 hours / GPS OFF up to 15 hours
Charging time		2.5 hours		2 hours		1 hour 15min		110 min
Sonar technology		Standard 2D sonar technology		Standard 2D sonar technology		Standard 2D sonar technology		CHIRP
Sonar mode		Basic		Raw / Basic		Raw / Basic		Raw / Basic
Distance measuring (from sonar to smartphone)		NO		NO		YES		YES
PACKAGE CONTENT								
		START sonar		PRO sonar		PRO+ 2 sonar		CHIRP+ 2 sonar
		Swivel		Mounting screws		Mounting screws		Mounting screws
		USB cable		USB cable		USB cable		USB cable
		Documentation		Neoprene pouch		Neoprene pouch		Neoprene pouch
				Documentation		Documentation		Documentation
								Night cover
FEATURES								
Can be used for ice fishing		NO		YES		YES		YES
Can create bathymetric maps with boat		NO		YES		YES		YES
Can create bathymetric maps from shore		NO		NO		YES		YES
Free bathymetric maps (community maps)		YES (for 3 months)		YES (for 3 months)		YES (for 3 months)		YES (for 3 months)
Can be mounted on a boat or kayak		NO		YES		YES		YES
Can be mounted on a bait boat (RC boat)		NO		YES		YES		YES
Fish ID (marks fishes with fish icons)		YES		YES		YES		YES
Weed ID (shows weed with green color)		YES		YES		YES		YES
Water temperature sensor		NO		YES		YES		YES
Mark points of interest on the map		YES		YES		YES		YES
Night fishing mode (blinking light on the sonar)		YES		YES		YES		YES
A-scope (Vertical flasher)		NO		YES		YES		YES
Different sonar screen color palettes		YES		YES		YES		YES
ADVANCED FEATURES								
Option to export raw bathymetric data (coordinates, depth, timestamp)		NO		YES		YES		YES
NMEA0183 data streaming over UDP		NO		NO		YES		YES

deeper

start

1. Arches and odd-shaped lines show individual fish.
2. Spotted and thick arches show schools of fish.
3. Green colour indicates vegetation or a soft bottom.



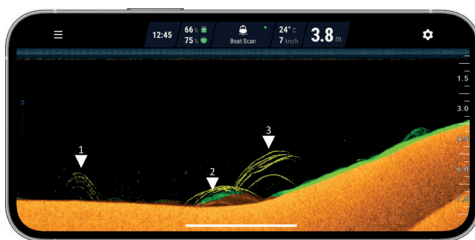
pro+ 2

1. Densely packed school of fish.
2. Individual fish shown as a slightly curved line/arch.
3. Green colours show vegetation.
4. A very bright bottom line colour indicates a hard bottom.



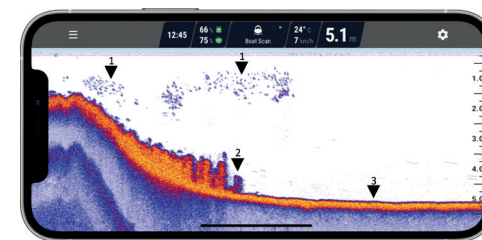
pro

1. Arches indicate fish that passed through the sonar cone, or the sonar passed over them.
2. A bump on the bottom could be brush or a fallen tree.
3. These arches indicate 4-6 fish gathered around the structure (2).



chirp+ 2

1. Loosely packed school of fish.
2. Shapes like this emerging from the bottom normally indicate vegetation.
3. Colours indicate how hard the sound return was. Blue – weak, red – medium, yellow – hard. The bright yellow line tells us the bottom is hard.



Q&A

Can you use Deeper sonar in the salty water (sea, ocean)?

Yes, it can be used in salty water.

Do you need any kind of cell connection or internet on the phone to use the Deeper?

No, you don't need any cell connection or internet connection to use the Deeper. Even if your smartphone has no SIM card, it will still work with the Deeper.

I've heard that sometimes Deepers have issues with connection range. Is it true?

Connection issues happen because of improper phone settings or if the device is not used according to the manual. There are extensive manuals on how to properly adjust the smartphone settings and improve the connection, which can be found on <https://deepersonar.com/support>

What rod and line should I use to cast the Deeper?

We recommend rods with at least 80-90g casting weight (feeder, spod rods are great for that). As for the line, at least 16lbs (7kg) braid line should be used. The stronger – the better.

What do I do if I've lost my Deeper, or if it was stolen?

It might be possible to track the sonar. Contact Deeper at support@deeper.eu for help.

Does Deeper offer repair services after the warranty has ended (battery replacement, electronic repairs)?

Yes, Deeper offers such services all across the EU, USA, Canada and other countries. Contact support@deeper.eu for help.